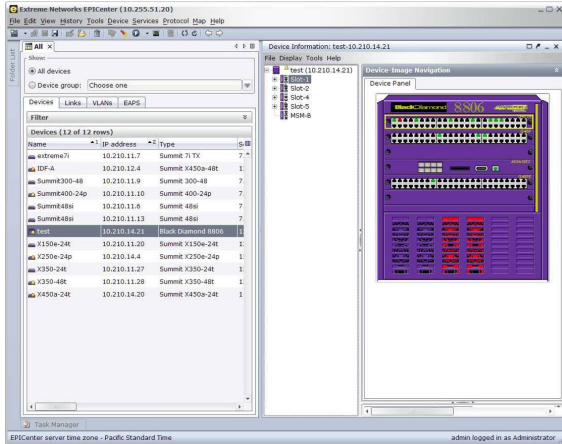


# EPICenter Network Management Software



*EPICenter® management suite is a scalable full-featured network management tool that simplifies configuration, troubleshooting and status monitoring of IP-based networks.*

## Operational Simplicity

- Flexible and intuitive user interface
- Topology view with alarm integration
- Firmware and configuration management
- Flexible scripts and macros to automate provisioning and monitoring
- Dynamic reporting and comprehensive network summary reports

## Voice-Class Availability

- Intelligent alarm systems
- Real-time statistics
- Ethernet Automatic Protection Switching (EAPS) monitoring and configuration checking
- End-to-end network service visualization and monitoring

## Comprehensive Security

- Role-based access control
- SNMPv3, SSH-2 and HTTPS protocol support
- IP/MAC address finder
- Audit log

## Service Extensibility

- Universal Port Manager for easy deployment of ExtremeXOS® Universal Port profiles
- Wireless discovery and management
- Integration with Avaya VoIP platform and management systems
- Link Layer Discovery Protocol (LLDP)—protocol support

*EPICenter delivers the essential requirements of network management while adding valuable and intuitive features that help save time by streamlining common tasks.*

EPICenter management suite from Extreme Networks® is a scalable full-featured network management tool that simplifies configuration, troubleshooting and status monitoring of IP-based networks. Offering a comprehensive set of network management applications for the network and its elements, EPICenter delivers the essential requirements of network management while adding valuable and intuitive features that help save time by streamlining common tasks.

## Network Management Challenges

What can you determine about your network at a glance? What's up and what's down, and how is everything configured? The answers to these questions are essential to delivering the applications and performance that users demand. To compound the problem, today's networks are subject to:

- Proliferation of new converged and mission-critical applications
- Constantly changing service offerings
- Unpredictable and rapidly growing network traffic
- Pressing requirements for simplicity and expediency in network deployment
- Security issues that threaten network integrity and network management access



## EPICenter Features

**EPICenter is a flexible management platform capable of establishing and maintaining networks that are undergoing rapid change due to convergence. EPICenter establishes a new benchmark for accommodating convergence applications by offering intuitive user interfaces and by reducing the complexity of managing converged networking environments. EPICenter offers an open architecture to accommodate a multi-vendor, service-rich environment that enables voice-class availability and the enforcement of robust security policies.**

### Operational Simplicity

EPICenter provides a flexible and intuitive user interface that makes navigation and performing network operations easy. Its dockable Windows interface lets the user view critical status and configuration of different devices simultaneously. The topology view in EPICenter displays every element of the network and how they are connected in Layer 2 and Layer 3. Configuration management further simplifies operations. Configuration management archives and reloads device configuration and performs configuration diffs or baselining for auditing purposes. Firmware management obtains firmware version and availability information, and performs multi-step upgrades—at once or scheduled—for single or multiple devices.

The flexible scripts and macros in EPICenter help users to configure multiple devices concurrently with minimal administrator intervention. Users can create automatic standard configurations with scripts for repetitive execution as needed. In addition, EPICenter manages and allows customization of ExtremeXOS CLI scripts—a very efficient way to roll out your network using configuration templates that can be applied to a switch via CLI scripts. This allows users to select CLI script templates that, for example, configure EAPS and ELSM resiliency, link monitoring protocols, Network Login and other best practices network security settings on a switch on all edge ports, thereby reducing switch configuration time.

The client/server architecture of EPICenter provides ease of use and flexibility. The EPICenter client is automatically updated when there is a new version available on the server. For deployments with multiple EPICenter servers, the user can designate one of the servers to be the primary, which will collect status from other servers and present them in a consolidated view.

### Voice-Class Availability

One of the key requirements of availability is to provide you with a notification of the health and status of the network. Alarm Manager provides detailed notification for any events. Real-time statistics for multiple ports and devices helps you manage your network effectively and increase continuous availability of the network.

Extreme Networks high availability protocol, EAPS, provides sub-50ms link failover. EPICenter manages any EAPS rings in the network and provides EAPS configuration verifier to avoid any misconfiguration.

### Comprehensive Security

EPICenter provides role-based access control that defines levels of access to EPICenter functions. Using roles allows the administrator to differentiate access levels for each group of users. EPICenter provides multiple features that control and monitor the security features on Extreme Networks products. VLAN Manager creates and manages VLANs easily throughout the network.

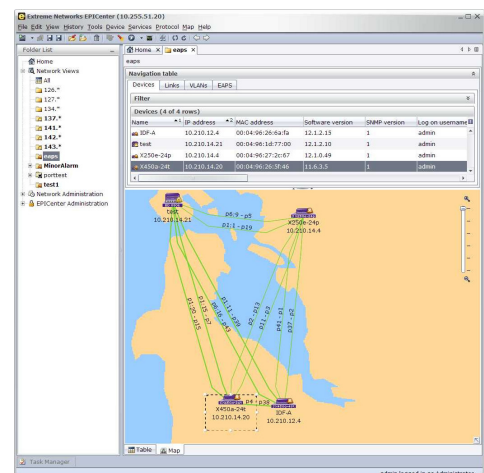
You may need to track down a specific host on your network due to some malicious activity. EPICenter provides an IP/MAC Address Finder tool to locate any MAC address on your network. To protect sensitive data from being intercepted or altered by unauthorized access, Secure Shell 2 (SSHv2) protocol and HTTPS protocols are provided. Operations performed using the scripts feature are recorded for audit trail purposes.

### Service Extensibility

EPICenter provides a third-party integration framework to help you integrate information from all the management frameworks to be managed and monitored on EPICenter. EPICenter integration with Avaya Integrated Management (AIM) software helps users launch AIM console and Avaya Device Manager from within EPICenter. This integration also helps to discover devices managed by AIM from within EPICenter. EPICenter scripts allow execution on multiple devices in one operation, and can be executed repeatedly. Any device running a MIB-II compatible SNMP agent can be discovered by EPICenter inventory management. Third-Party Integration Framework allows basic management of any third-party appliances (from Extreme Networks partners or otherwise). For managing more advanced features of a device, EPICenter provides a mechanism to launch proprietary management tools from within EPICenter. EPICenter supports LLDP for prompt discovery of Avaya and other devices.

### Intuitive Interface and Design

Simplicity begins with a detailed real-time view of the entire network. EPICenter topology allows a user to view a network of EPICenter managed devices and the links between devices as a set of maps. These maps can be organized into sets of submaps that allow a network to be represented as a hierarchical system of campuses, buildings, floors, closets or any logical groupings. Additional topology views can be created so that several different representations of a network are available for different purposes. The hierarchical views are fully customizable to effectively meet the business and network requirements of each organization.



# EPICenter Features

## Scripts

The EPICenter Script feature is a powerful scripting capability that allows the user to automate provisioning of network devices and services. It provides a comprehensive set of programming control structures that allows the user to create complex provisioning workflows. The EPICenter administrator can assign access levels to control who is allowed to run and modify a script. To use a script, the user simply selects the desired script from the menu, enters the required parameters, and selects the list of devices to which the script applies. Configuration changes are recorded in an audit log.

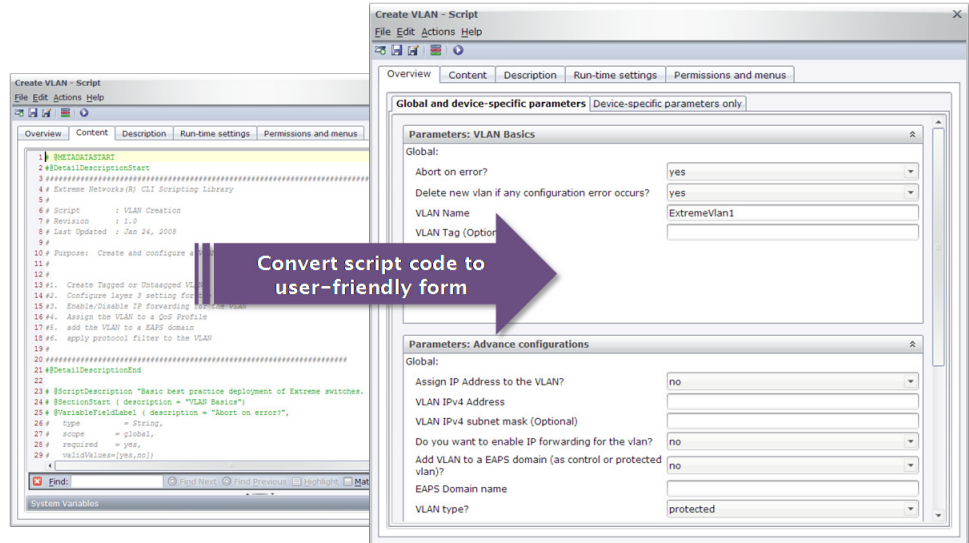


Figure 1: Scripting

## EAPS Monitoring and Configuration Checker

Ethernet Automatic Protection Switching (EAPS) provides carrier-class network resiliency and availability to enterprise networks. EPICenter helps monitor EAPS rings graphically. The nodes in the rings, ring status and topology changes due to ring failure are depicted graphically in Figure 2.

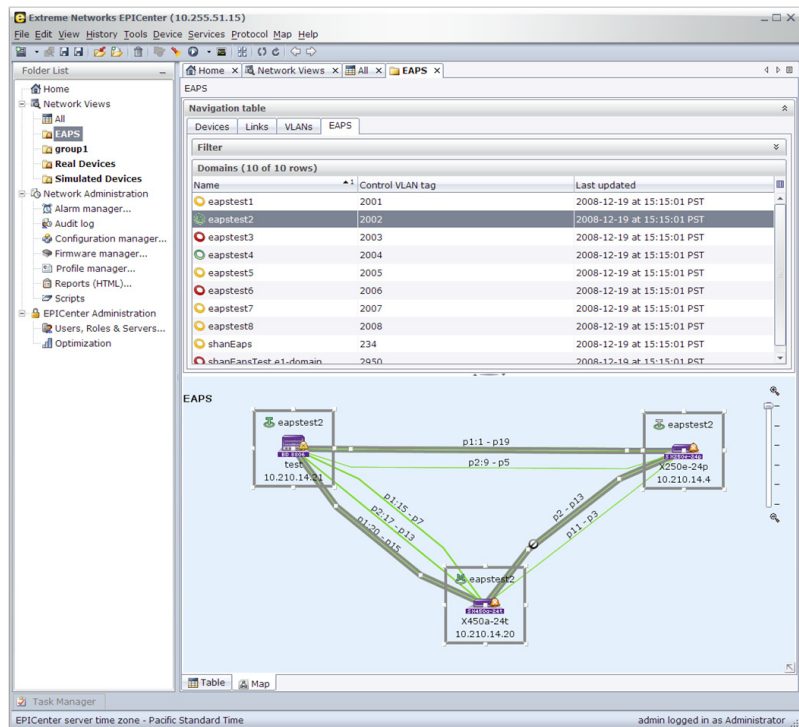


Figure 2: EAPS Monitoring

# EPICenter Features

## Network Service Topology Visualization

As network configuration becomes more complex, the ability to visualize, monitor, and troubleshoot network services end-to-end is critical. Network services like VLAN, VLAN services, and vMAN can be viewed end-to-end via EPICenter. For example, if a user selects a particular VLAN, the corresponding network devices and links are highlighted on the topology map. Alarm conditions like link failures can also be viewed at a network service level. Devices and links will dynamically change in color based on alarm condition. For network services like VLAN translation, EPICenter provides the user an end-to-end view including the VLAN translations for the intermediary devices. Knowing how a VLAN is being translated and the physical ports it's connected to allows the user to quickly trace and troubleshoot connectivity issues.

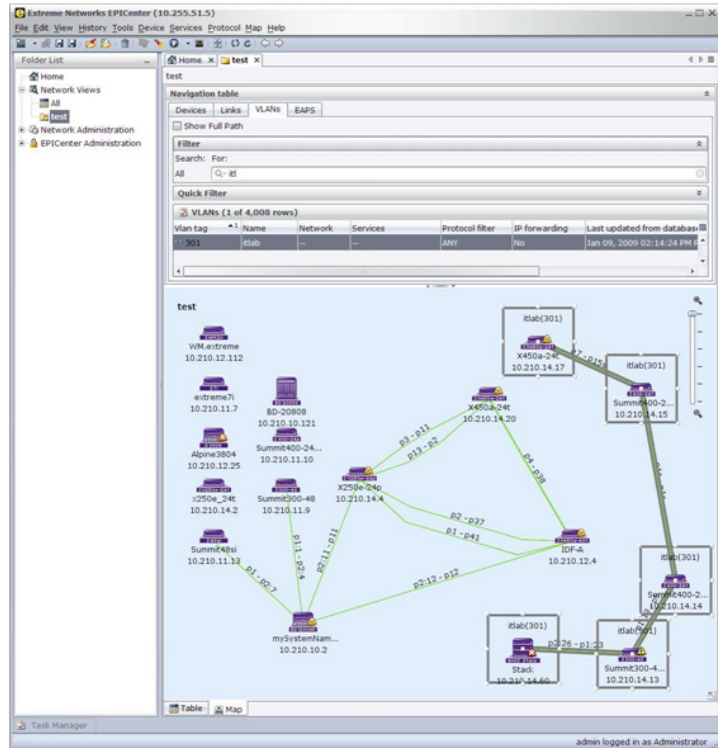


Figure 3: Network Service Topology Visualization

## Universal Port Manager

The Universal Port Manager feature provided for ExtremeXOS based switches greatly simplifies network deployment of VoIP and dynamic security policies.

The Universal Port Manager feature in EPICenter (Figure 4) helps define and distribute Universal Port profiles for ExtremeXOS based switches. The auto discovery feature in Universal Port Manager helps in centralized monitoring and management of network-wide profiles. It allows users to audit currently deployed profiles on port(s) and see how the deployed versions differ from the ones maintained in EPICenter. It makes it really simple for users to configure a triggering mechanism for a profile, based on a timer or pre-defined events. It allows users to deploy the profile to more than one port at the same time, making it a real time saver. Universal Port Manager in EPICenter makes it easy for users to start rolling out this powerful Plug-and-Play capability with some pre-packaged template profiles.

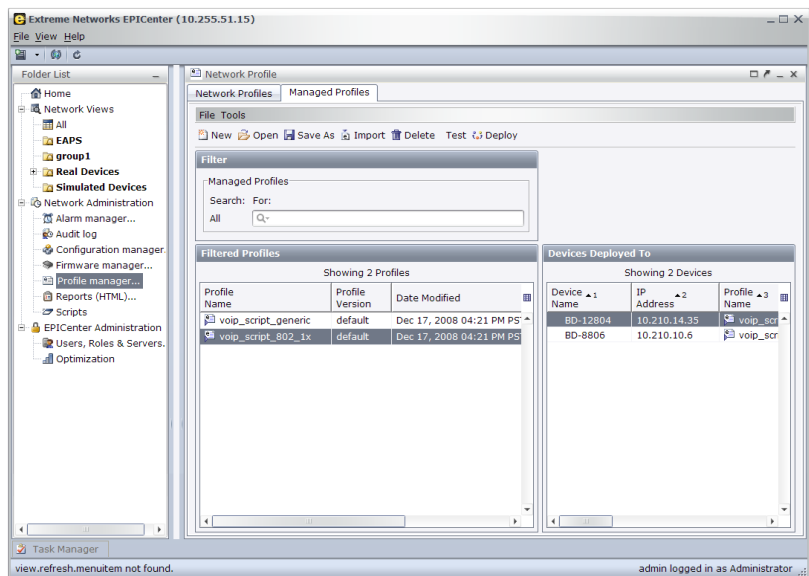


Figure 4: Universal Port Manager

## Technical Specifications

### ExtremeWare/ExtremeXOS versions supported by EPICenter 7.0

Products	Extreme Networks OS Requirements
Summit® 200 7.1e or later	(Note: Summit 200 stacking not supported in 7.1e. Please upgrade to 7.4 for stacking support.) 7.3e or later required for 802.1x and SNMPv3 support 7.4 or later required for Summit 200s stacking support
Summit 300-24	7.3e or later
Summit 300-48	6.2a or later 7.3e or later required for 802.1x and SNMPv3 support
Summit 400-24	7.4 or later
Summit 400-48	7.2e or later 7.3e or later required for 802.1x and SNMPv3 support 7.4 or later required for Summit 400 stacking support
All "i" Series Switches, Alpine, MSM64i	6.2a or later 7.1 or later required for 802.1x and SNMPv3 support
Summit X150 series	ExtremeXOS 12.0 or later
Summit X250e series	ExtremeXOS 12.0 or later
Summit X350 series	ExtremeXOS 12.0 or later
Summit X450 series	ExtremeXOS 11.2 or later ExtremeXOS 11.5 or later for Summit X450e, Summit X450a
Summit X650 series	ExtremeXOS 12.2 or later
Summit WM series	Version 5.0 or later
Alpine® 3800 series	ExtremeWare® 6.2 or later
BlackDiamond® 6800 Series	ExtremeWare 6.2 or later
BlackDiamond 8800 series	ExtremeXOS 11.1 or later
BlackDiamond 10808	ExtremeXOS 11.0 or later
BlackDiamond 12802	ExtremeXOS 12.0 or later
BlackDiamond 12804	ExtremeXOS 11.4 or later
BlackDiamond 20808	ExtremeXOS 12.2 or later
Sentriant® AG200	Version 5.1 or later
Sentriant NG300	Version 2.5 or later
ReachNXT™ 100-8t	All
Server Operating System Requirements	Server Memory and Other Requirements
Microsoft Windows Vista, Windows XP Professional with SP1 or later	Minimum 1 GB RAM (2 GB or higher recommended) Minimum 2 GB free disk space 1 GHz Pentium-compatible processor (2+ GHz recommended)
Windows 2003 Server	
Solaris 10*	
Red Hat Enterprise Linux 5.0**	
Client Browser Requirements	Client Memory and Other Requirements
Internet Explorer 6.0 or higher; Mozilla Firefox 1.5 or higher	Minimum 512 MB RAM (1 GB or higher recommended)

\*Only the 64-bit version of Solaris is supported

\*\*Only x86-based platforms are supported

## Ordering Information

Part Number	Name	Description
81615	EPICenter 7.0 Bronze-20 Base	EPICenter 7.0 Bronze-20 Base is a comprehensive network management suite for status monitoring, configuration and troubleshooting of Extreme Networks wired, wireless and security product lines. EPICenter allows centralized management using an intuitive and easy-to-use user interface. Manages up to 20 network devices. Key only, software downloadable
81616	EPICenter 7.0 Silver-250 Base	EPICenter 7.0 Silver-250 Base is a comprehensive network management suite for status monitoring, configuration and troubleshooting of Extreme Networks wired, wireless and security product lines. EPICenter allows centralized management using an intuitive and easy-to-use user interface. Manages up to 250 network devices. CD, Key + documentation
81617	EPICenter 7.0 Silver-250 Upgrade	EPICenter 7.0 Silver-250 Upgrade is a scalability upgrade to the EPICenter Bronze-20 software suite via license key to allow managing up to 250 network devices. Key only, requires EPICenter 7.0 Bronze-20 Base.
81618	EPICenter 7.0 Gold-2000 Upgrade	EPICenter 7.0 Gold-2000 Upgrade is a scalability upgrade to the EPICenter Silver-250 software suite via license key to allow managing up to 2000 network devices. Key only, requires EPICenter 7.0 Silver-250 Base or Upgrade.

*Note: EPICenter and its Bronze, Silver and Gold licenses are licensed per major release. Extreme Networks EPICenter Software program allows customers to always stay current with the latest major release.*

*For the latest EPICenter product specifications, Service Packs and evaluation software/licenses, please visit the EPICenter page on our web site: <http://www.extremenetworks.com>.*



[www.extremenetworks.com](http://www.extremenetworks.com)

**Corporate and North America**  
 Extreme Networks, Inc.  
 3585 Monroe Street  
 Santa Clara, CA 95051 USA  
 Phone +1 408 579 2800

**Europe, Middle East, Africa and South America**  
 Phone +31 30 800 5100

**Asia Pacific**  
 Phone +852 2517 1123

**Japan**  
 Phone +81 3 5842 4011