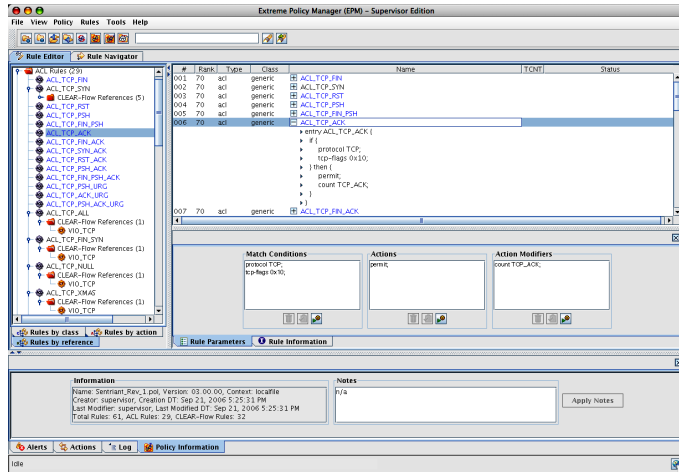


# Extreme Networks® Policy Manager



*Extreme Networks Policy Manager—an easy way to manage ACL and CLEAR-Flow switch information.*

## Multi-platform Software with Workflow Wizards

- Managing ACLs and CLEAR-Flow on ExtremeXOS-enabled switches
- Real-time interaction
- Read, display, edit, merge, and test rules
- ACLs and CLEAR-Flow from a single GUI
- Realtime port and VLAN activation/deactivation
- Realtime rule activation data/statistics

## Rule Editor Options

- User created classification
- Action-based sorting—Permit, Deny, QoS, Count and Mirror
- Reference linking to other referenced ACL or CLEAR-Flow statements
- Rule import/export
- Validation and rule checking

*Extreme Networks Policy Manager improves overall network security by helping prevent misconfigurations in ACL rules.*

Extreme Networks Policy Manager (EPM) is a client software application that provides a graphical user interface to manage policy files on ExtremeXOS™-based switches. EPM simplifies policy management and streamlines the use of the Extreme Networks CLEAR-Flow scripting language for sophisticated switch manipulation.

## Rule Navigator Features

- Powerful search capabilities
- Ranking and ordering assignment
- Manual override for ACL precedence algorithm
- Meta-data stored within the policy file
- Tracks changes down to the individual rule elements
- Policy file version and owner
- Audit data such as created/modified dates and time, user data
- Auto-detection external modification
- User editable notes

## GUI-Based Rule Creation, Based on Policy Version

- ACL creation
- Match conditions, actions and action modifiers
- CLEAR-Flow
- Match conditions
- True/False action
- Global and policy variables



## Technical Specifications

---

### Extreme Networks OS Requirements

- ExtremeXOS 11.4 or later

### Operating System Requirements

- Windows XP (Home or Professional)
  - Pentium 4 or AMD Athlon
  - Minimum 512 MB RAM
  - 10GB Storage
- Fedora Core 5
  - Pentium 4 or AMD Athlon
  - Minimum 512 MB RAM
  - 10GB Storage
- Mac OS 10.4x
  - Intel Core Duo
  - Minimum 512 MB RAM
  - 10GB Storage

### Client Requirements

- Fedora Core 5
  - X-windows
  - TFTP server
- Windows XP
  - TFTP server
- MacOS 10.4.xe
  - TFTP server



[www.extremenetworks.com](http://www.extremenetworks.com)

[email: info@extremenetworks.com](mailto:info@extremenetworks.com)

**Corporate  
and North America**  
Extreme Networks, Inc.  
3585 Monroe Street  
Santa Clara, CA 95051 USA  
Phone +1 408 579 2800

**Europe, Middle East, Africa  
and South America**  
Phone +31 30 800 5100

**Asia Pacific**  
Phone +852 2517 1123

**Japan**  
Phone +81 3 5842 4011

© 2007 Extreme Networks, Inc. All rights reserved.

Extreme Networks, the Extreme Networks Logo and ExtremeXOS are either registered trademarks or trademarks of Extreme Networks, Inc. in the United States and/or other countries.