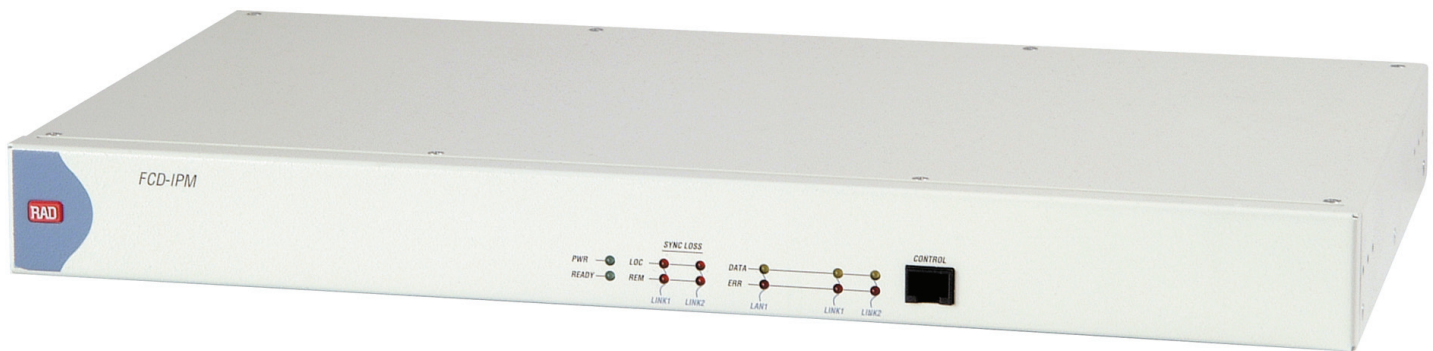


FCD-IPM

E1/T1 or Fractional E1/T1 Modular Access Device with Integrated Router



- Modular Integrated Access Device (IAD), providing bundled data, IP and telephony services over E1/T1 access lines
- E1/T1 uplink over copper or fiber optic media
- E1 over SHDSL uplink
- Variety of user interfaces that include E1, T1, analog voice, LAN and data ports
- Supports Frame Relay, PPP and MLPPP

Modular access device providing bundled services over E1/T1 access lines

FCD-IPM is an E1/T1 or fractional E1/T1 IAD. It enables service providers to bundle data, IP, and voice access services over a single E1 or T1 line (see *Figure 1*).

FCD-IPM features two slots for various modules:

- Single or dual sub-E1/T1 module
- 4-port or 8-port analog voice module
- 10/100BaseT 5-port LAN module
- Transparent $n \times 64$, $n \times 56$ data module.

An integrated router supports IP/IPX routing and transparent bridging.

An optional integrated 4-port Ethernet/Fast Ethernet switch can be installed in place of single or dual LAN ports.

A single transparent $n \times 64$, $n \times 56$ data port enables connecting an external router or other HDLC-based devices.



FCD-IPM

E1/T1 or Fractional E1/T1 Modular Access Device with Integrated Router

Supported WAN services include:

- E1 or fractional E1, with or without LTU, operating at rates of up to 2.048 Mbps
- T1 or fractional T1 CSU/DSU operating at rates of up to 1.544 Mbps
- E1 or T1 over fiber optic links
- Frame Relay with auto-learn of DLCI and maintenance protocol
- ISDN BRI ("U" or "S" interface) for data services backup.

Internet access capabilities are enhanced through:

- **IP Service Access** – authentication is provided by PAP/CHAP
- **Solid Firewall** – protects an office LAN from undesired entry from the Internet
- **NAT** – allows various LAN users to share several legal IP addresses
- **Single IP** address translation – allows a small or medium office LAN to connect to the Internet using a single IP address that can be allocated in a dynamic or static way

- **DHCP** server – allows sharing IP address pools between DHCP clients on the LAN.

FCD-IPM supports up to 12 analog voice channels. These channels are PCM-encoded with A-Law or μ -Law. The interface options are:

- 2-wire FXS for direct connection to telephones
- 2-wire FXO for direct connection to a PBX extension line
- 2-wire or 4-wire E&M for connection to PBX tie lines.

The sub-E1/T1 or analog voice ports provide toll-quality voice transmission.

The fail-safe bypass of the built-in sub-E1/T1 link ensures the continuity of voice services in case of power supply failures. The bypass is not available for the fiber optic main links.

ISDN or PSTN backup, using an external dial-up modem, ensures the continuity of data services

An optional data port can be utilized as a second serial router port.

Configuration is easily accomplished through a quick setup menu, using a terminal attached to the control port or by Telnet access into the device over the LAN/WAN.

FCD-IPM features a variety of inband and out-of-band management options. These options include dedicated timeslot, dedicated DLCI and dial-in connectivity.

The SNMP agent provides management by RADview or any other standard SNMP management station.

Undesired access to FCD-IPM via Telnet or SNMP can be blocked or protected by a password.

The dual-level management authentication allows access to router configuration parameters, while restricting access to network configuration parameters.

Software download is available via the control port, using XMODEM or via LAN/WAN using TFTP.

Parameter file download and upload is available via LAN or WAN using TFTP.

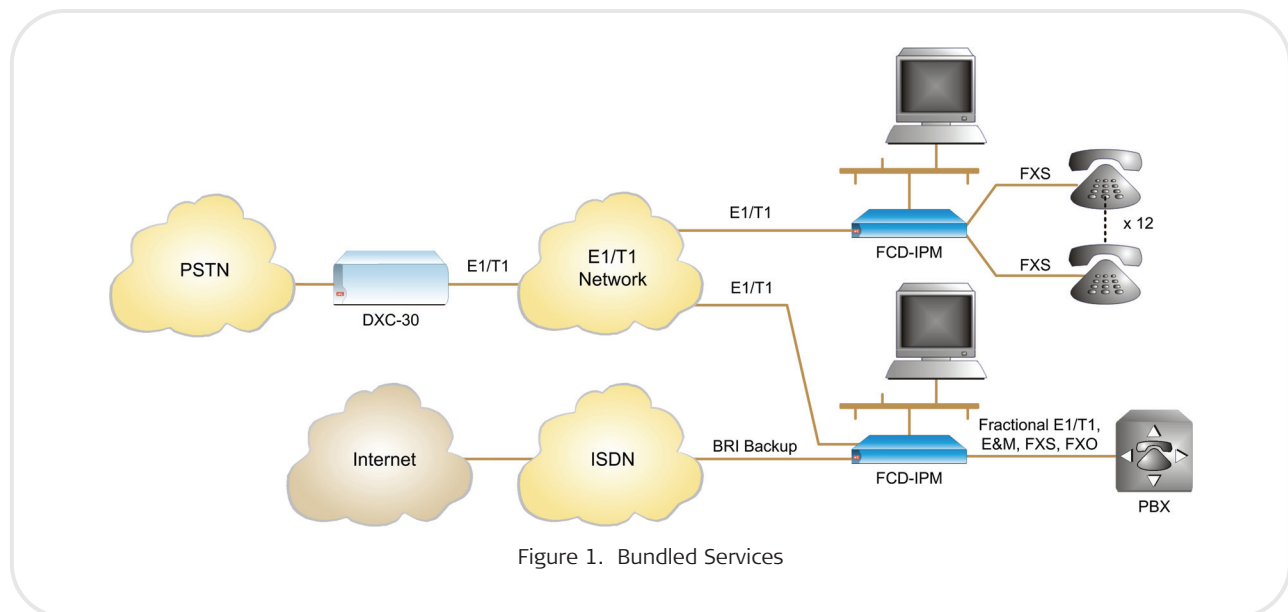


Figure 1. Bundled Services

Specifications

E1 INTERFACE

Framing

G732N (no MF, CCS)
G732N (no MF, CCS) with CRC-4
G732S (TS16 MF, CAS)
G732S (TS16 MF CAS) with CRC-4

Bit Rate

2.048 Mbps

Line Code

AMI

Zero Suppression

HDB3

Impedance

120Ω, balanced
75Ω, unbalanced

Signal Level

Receive:

0 to -36 dB (with LTU)
0 to -12 dB (without LTU)

Transmit:

3V (±10%), balanced
2.37V (±10%), unbalanced

Jitter Performance

As per ITU G.823

Compliance

ITU G.703, G.704, G.706, G.732

Connectors

RJ-45 8-pin, balanced
Two BNC coaxial, unbalanced

Diagnostics

User activated local and remote loopbacks

T1 INTERFACE

Framing

D4, ESF

Bit Rate

1.544 Mbps

Line Code

AMI

Zero Suppression

Transparent, B7ZS, B8ZS

Impedance

100Ω, balanced

Signal Level

Receive:

0 to -34 dB (CSU)
0 to -10 dB (DSU)

Transmit:

0, -7.5, -15, -22.5 dB (CSU)
0-655 ft (DSU)

Jitter Performance

As per AT&T TR-62411

Compliance

AT&T TR62411, ANSI T1.403

Connectors

RJ-45 8-pin, balanced

Diagnostics

User activated local and remote loopbacks
Network activated loops and FDL loops
(RLB, LLB)

ISDN INTERFACE (DATA BACKUP)**Interfaces**

ISDN BRI, "S" and "U"

Compliance

ETS 300012, I.430, NTT, 5ESS, DMS-100, NI1

ANALOG VOICE INTERFACES**Number of Voice Channels**

Up to 12

Modulation Method

PCM (per ITU-T G.711 and AT&T PUB-43801), μ -Law or A-Law

E&M Interface

2-wire or 4-wire, supporting different types of E&M signaling: RS-464 Types I, II, III and V, and BT SSDC5, configured by software

FXS Interface

Loop start, wink start (reverse polarity) for direct connection to a 2-wire telephone, CID (Caller ID) support

FXO Interface

Loop start, wink start (reverse polarity) connection to a 2-wire telephone exchange subscriber line

Nominal level: 0 dBm

Nominal impedance: 600 Ω

Return loss: (ERL), better than 20 dB

Frequency response (Ref: 1020 Hz)

± 0.5 dB, 300 to 3000 Hz

± 1.1 dB, 250 to 3400 Hz

Signal to total distortion, G.712, G.713 method 2:

0 to -30 dBm0, better than 33 dB

+3 to -45 dBm0, better than 22 dB

Idle channel noise: better than -70 dBm0 (+20 dBnc)

Transformer isolation: 1500 VRMS

Diagnostics

Local digital loopback towards the analog side

Remote analog loopback towards the remote side, activated from local side
1 kHz tone injection towards the analog side

Activity indicators

Connectors

E&M: RJ-45, 8-pin

FXS, FXO: RJ-11, 6-pin

FCD-IPM

E1/T1 or Fractional E1/T1 Modular Access Device with Integrated Router

LAN INTERFACE

Number of Ports

1, 2, or 4

Standards

Conforms to Ethernet/IEEE 802.3

Type

Single 10/100BaseT (RJ-45)

Dual 10BaseT (RJ-45) or 10Base2 (BNC)

4-port 10/100BaseT (RJ-45) switch

DATA PORT INTERFACES

Type

V.35 with 34-pin female

V.24/RS-232 or RS-530 with 25-pin

D-type, female

X.21 with 15-pin D-type, female

V.36/RS-422 with 37-pin

D-type, female

Note: When FCD-IPM includes primary and secondary WAN interfaces, all synchronous data ports are equipped with 25-pin D-type, female connectors. Adapter cables can be ordered from RAD for V.35, V.36 and X.21 interfaces (see *Optional Accessories*).

FIBER OPTIC INTERFACES

Type

See *Table 1*

Compliance

ITU G.921, G.956

GENERAL

WAN Protocols

Frame Relay - RFC 1490

PPP and MLPPP

Routing Types

Static, RIP-1, RIP-2, RIP/SAP, OSPF

ARP Table

Up to 300 MAC addresses

Power

AC: 100 to 240 VAC, 50/60 Hz, 25 VA max

DC: 24/48 VDC

Physical

Height: 43.7mm (1.7 in)

Width: 444 mm (17.3 in)

Depth: 243 mm (9.5 in)

Weight: 5 kg (11 lb)

Environment

Temperature: 0° to 50°C (32° to 122°F)

Humidity: Up to 90%, non-condensing

Table 1 Fiber Optic Interface Characteristics

Wavelength	Fiber Type	Transmitter Type	Power	Receiver Sensitivity	Typical Max. Range	
[nm]	[μ m]		[dBm]	[dBm]	[km]	[miles]
850	62.5/125 multimode	VCSEL	-18	-38	5	3
1310	9/125 single mode	Laser	-12	-39	62	38
1550	9/125 single mode	Laser	-12	-39	100	62

FCD-IPM

E1/T1 or Fractional E1/T1 Modular Access Device with Integrated Router

Ordering

FCD-IPM/~/\$/+/*

Legend

~ Optional DC power supply:

DC 24/48 VDC

\$ Primary WAN interface with optional second data port:

E1/# E1 or fractional E1

T1/# T1 or fractional T1

E1/?/!/# E1 or fractional E1 with built-in fiber optic modem

T1/?/!/# T1 or fractional T1 with built-in fiber optic modem

Optional second WAN DTE interface:

V24T V.24/RS-232

V35T V.35

530T RS-530

V36T V.36

X21T X.21

Note: When FCD-IPM includes primary and secondary WAN interfaces, all synchronous data ports are equipped with 25-pin D-type, female connectors. Adapter cables can be ordered from RAD for V.35, V.36 and X.21 interfaces.

? Fiber optic connector:

ST ST connector

FC FC connector

SC SC connector

! Wavelength and transmitter:

85 850 nm, multimode

13L 1310 nm, single mode laser

15L 1550 nm, single mode laser

+ LAN interface:

B 10Base2 (BNC)

U 10/100BaseT (UTP)

2B 2 × 10Base2 (BNC)

2U 2 × 10BaseT (UTP)

UB 1 × 10BaseT (UTP)

1 × 10Base2 (BNC)

4U 4 × 10/100BaseT (UTP) built-in switch

* optional sub-E1/T1, analog voice or ISDN backup interfaces for E1/T1:

S sub-E1/T1

FXS 4 built-in FXS voice ports

FXO 4 built-in FXO voice ports

E&M 4 built-in E&M voice ports

IBE ISDN "S" interface

IBU ISDN "U" interface

FCD-IPM-M/&

FCD-IPM Module

Legend

& I/O module type:

S-E1/@ sub-E1

S-T1/@ sub-T1

S-2E1 2-port sub-E1

S-2T1 2-port sub-T1

VC4/@/^ four analog voice ports

VC8/^ eight analog voice ports

Vxx/@ universal data

SWITCH 5-port 10/100BaseT Ethernet switch

@ DCE port interface:

V24C V.24

V35C V.35

530C RS-530

V36C V.36

X21C X.21

^ Analog voice interface:

FXS FXS

FXO FXO

E&M E&M

Notes:

1. The second WAN option is not available when ordering E1/T1 with an ISDN backup.

2. The dual LAN configuration is not available when ordering E1/T1 with an ISDN backup.

3. The 2-port sub-E1/T1 and 8-port analog voice modules occupy both slots.

OPTIONAL ACCESSORIES

RM-34

Hardware for mounting one FCD-IPM unit in a 19-inch rack

Adapter cables for DB-25 synchronous data interface connectors

CBL-530/V35/F

One male DB-25 to one female 34-pin (V.35) connector

CBL-530/449/F

One male DB-25 to one female DB-37 (V.36) connector

CBL-530T/21C/F

One male DB-25 to one female DB-15 (X.21) connector

International Headquarters

24 Raoul Wallenberg Street
Tel Aviv 69719, Israel
Tel. 972-3-6458181
Fax 972-3-6498250, 6474436
E-mail market@rad.com

North America Headquarters

900 Corporate Drive
Mahwah, NJ 07430, USA
Tel. 201-5291100
Toll free 1-800-4447234
Fax 201-5295777
E-mail market@radusa.com

www.rad.com



data communications

The Access Company