

RVS IPVgate-20P

PRI VoIP Gateway Router



Integrating digital enterprise class telephony, fax, and data, with standard SIP support



- Connects 30/23 lines (1 PRI E1/T1) over any broadband Internet connection, using SIP
- Operates as VoIP access gateway (CPE) or VoIP termination gateway (Media Gateway)
- Multi-layered Quality-of-Service (QoS) to ensure business-quality telephone calls
- Built-in VPN (IPSec) server to create enterprise virtual networks
- Fully interoperable with leading vendors' SIP-based equipment

IPVgate-20P is a cost-effective, cutting-edge, standalone ISDN device, which can serve as VoIP Access Gateway or VoIP Trunking Gateway, fully interoperable with leading soft switches and SIP servers.

Note: IPVgate-20P is part of the RAD VoIP System (RVS) product line.

The device employs superior voice technology for connecting digital PBX systems to IP-based telephony networks, as well as for integrating into new IP-based PBX architecture.

IPVgate-20P is designed to be the most efficient voice and data solution for businesses that would like to empower their existing digital PBX with VoIP access service. IPVgate-20P utmost availability of service can be achieved by its network backup capabilities of ADSL and WAN.

IPVgate-20P comprises two E1/T1 PRI (RJ-45) interfaces. One interface is connected to the PBX and the other one to the PSTN as a backup (if required by the end user). The unit allows up to 30/23 (E1/T1) concurrent VoIP or PSTN calls.



data communications

The Access Company

IPVgate-20P

PRI VoIP Gateway Router

A call is routed to the PSTN backup when power failure occurs or if the IP network is not functioning/responding. In addition, a predefined table configuration guarantees the routing of special subscribers through the PSTN.

In order to ensure proper clock synchronization, IPVgate-20P can either generate locally a TDM clock and provide it to the PBX or synchronize to a clock received directly from the PSTN and relay this clock to the PBX.

IPVgate-20P can also be used as an E1/T1 PRI termination SIP media gateway.

VPN

Branch offices can be easily and securely connected to the HQ office using the built-in VPN IPSec server/client. Utilizing a 3DES encryption algorithm and up to 10 tunnels per device, IPVgate-20P transparently connects the enterprise LANs to a single virtual WAN.

ISDN

Compliant with most ISDN PBXs, IPVgate-20P generates Q.931 signaling and provides supplementary services such as Time, DDI (Direct Dialing Inward), MSN (Multiple Subscriber Numbering), CLIR (Caller-ID Restriction), CLIP (Caller-ID Presentation) and AOC (Advice of Charge). AOC variations, such as AOC metering, AOC currency, AOC at start of call, AOC during call, and AOC at end of call are also supplied.

An additional dual-purpose Sync/Backup PRI interface allows cascading of units and clock synchronization, which is essential for qualitative PBX operation.

FAILSAFE SUPPORT

IPVgate-20P performs SIP fail backup by DNS number resolving.

When a central SIP server fails to respond, IPVgate-20P accesses the operator or Enterprise DNS server to resolve the IP address of the VoIP trunking gateway or of another end-point device.

Utilizing its backup line (connected to Telco lines) the unit can switch all phone calls to regular telephony upon broadband connectivity failure.

IPVgate-20P is equipped with an integrated ADSL modem and provides ADSL line monitoring and re-routing of all traffic to a backup router upon connectivity failure via the additional Ethernet WAN interface.

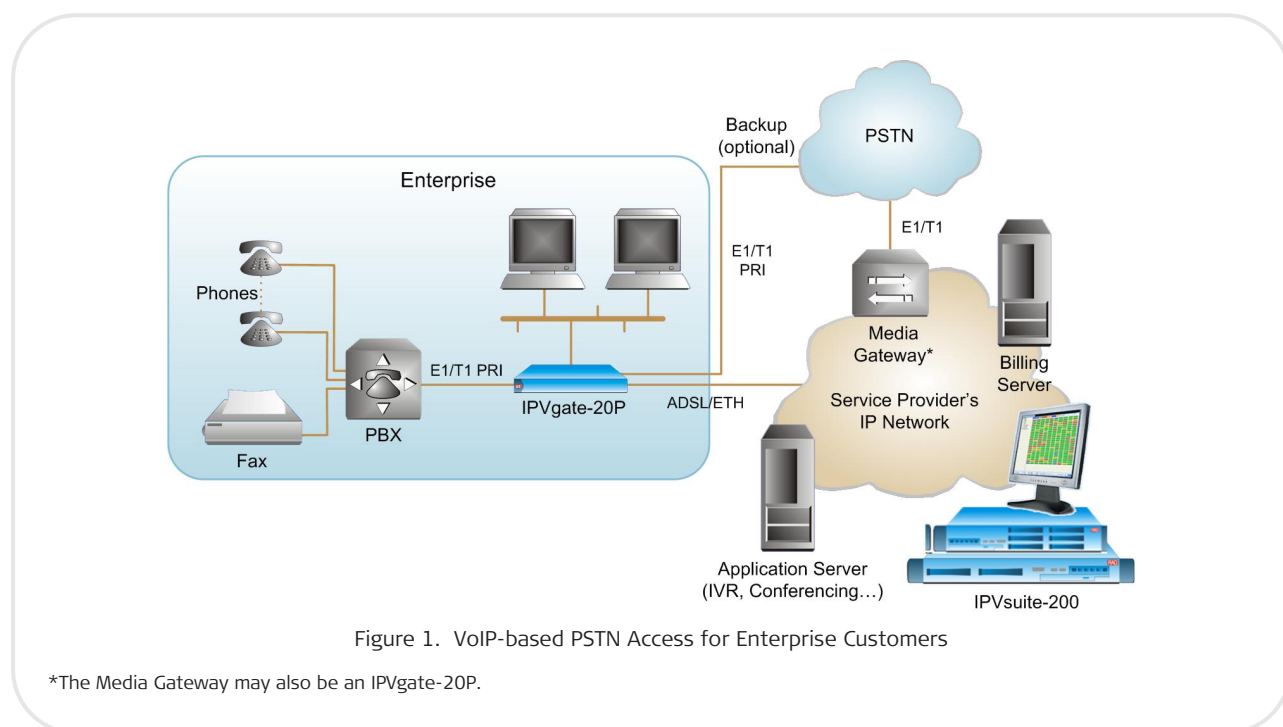


Figure 1. VoIP-based PSTN Access for Enterprise Customers

*The Media Gateway may also be an IPVgate-20P.

Specifications

NETWORK INTERFACES

WAN

Ethernet 10/100BaseT and
ADSL

LAN

Ethernet 10/100BaseT

Connectors

Ethernet: RJ-45
ADSL: RJ-11

Data Transfer Protocols

IPv4
Router with NAT/NAPT
RIP II
DHCP client/Server
SNTP
DMZ
PPPoE/PPTP
PPPoA, iPoATM (for ADSL interface)

PRI INTERFACE

PRI Protocols

Layer 1: I.430
Layer 2: Q.921, LAP-D (I.441)
Layer 3: Q.931 (I.451)
QSIC
Country Variance:
North America: National ISDN-2
Euro ISDN: ETSI NET 3, NET 5
France: VN2, VN3
Germany: 1TR6
Austria: TSO13.1

Telephony

30/23 digital lines (1 PRI E1/T1) terminated
in RJ-45 connector
PRI backup line (to PSTN)
PRI synchronization line for cascading
Call progress tones per country
(dial-tone, busy tone, ringing tone)

ISDN supplementary services:

- DDI (dial into/from extension) support
- Digit stripping
- MSN (Multiple Subscriber Numbering)
- Advice of Charge (AOC):
AOC-S, AOC-D, AOC-E
- Caller-ID, Time & AOC display
- CLIR, CLIP support

VOICE OVER IP

SIPv2 based
UDP/RTP packets
Silence Suppression
Echo Cancellation
VAD
CNG
Dynamic Jitter Buffer

Fax

T.38 compliant Group 3 fax relay and
modem pass-through
Fax bypass

Compression Algorithms

G.711
G.723.1
G.729A

QoS

Diffserv
Upstream priority

SECURITY

Encrypted Phone/Fax P2P VoIP calls

VPN

IPSec server/client with Tunnel IP-filtering

Firewall

Stateless, port level IP-filtering
SSLv3/TLSv1

MANAGEMENT

Quick-install web page
Remote ADSL line quality monitoring
RS-232 port for basic configuration
Telnet
FTP server
Remote update/upgrade
Fully compatible with IPvSuite-200 Class 5
softswitch, management, provisioning and
monitoring system.

GENERAL

Power

100–240 VAC, 50/60 Hz or
-48 VDC (-40 to -72 VDC)

Physical

Height: 4.37 cm (1.7 in)
Width: 44 cm (17.3 in)
Depth: 24 cm (9.4 in)
Weight: 3 kg (6.6 lb)

Environment

Operating Temperature: 5° to 40°C
(41° to 104°F)
Storage Temperature: -25° to 70°C
(-77° to 158°F)
Humidity: Up to 90%, non-condensing

IPVgate-20P

PRI VoIP Gateway Router

Ordering

IPVgate-20P/*

Legend

- * PRI interface type
- E1** E1
- T1** T1

SUPPLIED ACCESSORIES

Power cord (VAC) and AC/DC plug (-48 VDC)

E1/T1 RJ-45 regular cable

E1/T1 RJ-45 cross cable

OPTIONAL ACCESSORIES

CBL-SP-9

Straight cable for terminal configuration with one male and one female DB-9 connector.

Table 1. IPVgate Family Comparison Table

	IPVgate-20L	IPVgate-20A	IPVgate-20B	IPVgate-20P
Uplink Ports	ADSL2+ or ETH	ADSL2+ or ETH	ADSL or ETH	ADSL and ETH
User Ports	2FXS	2/4 FXS	2/4 BRI	1 PRI E1/T1
LAN Ports	4 (ETH Switch)	4 (ETH Switch)	1	1
Number of Simultaneous Calls	2	2/4	4/8	30/23
PSTN Backup Line	-	-	+	+
PBX Sync Ports	N/A	N/A	+	+
WiFi Option	+	+	-	-
Advice of Charge (AoC)	-	-	+	+
PSTN Termination Gateway	-	-	-	+
VPN (IPsec/3DES)	-	+	+	+

International Headquarters
 24 Raoul Wallenberg Street
 Tel Aviv 69719, Israel
 Tel. 972-3-6458181
 Fax 972-3-6498250, 6474436
 E-mail market@rad.com

North America Headquarters
 900 Corporate Drive
 Mahwah, NJ 07430, USA
 Tel. 201-5291100
 Toll free 1-800-4447234
 Fax 201-5295777
 E-mail market@radusa.com

www.rad.com



data communications
 The Access Company