

Fractional T1 Interface Main Link Module



FEATURES

- Connects the Kilomux to fractional T1 services
- Supports D4 and ESF framing format
- Selectable 1's density control: Transparent, B7ZS, B8ZS
- Optional built-in CSU

DESCRIPTION

- The KML.7 main link module allows direct connection of the Kilomux to fractional T1 services, eliminating the need for external conversion equipment. KML.7 places Kilomux framed information over standard T1 frames that can be transmitted via T1 network to another Kilomux on the remote side.
- The KML.7 is compatible with all carrier provided T1 services, meeting ANSI and AT&T requirements (AT&T 62411, 62421; ANSI T1.403). Both D4 and ESF framing formats are supported. Zero suppression is selectable for Transparent, B7ZS or B8ZS.
- The KML.7 supports the following link speeds: 56, 64, 128, 256, 384, 512, 768, 1024 and 1536 kbps. Three timing options are supported: LBT (clock is locked on the network), Internal and DCE (external).
- The Kilomux multiplexing frame is placed into one to 24 timeslots on the T1 frame.
- Diagnostics capabilities include local and remote loopback on the T1 link and T1 network loopback. The T1 network loopback is code activated and is available only on modules which include a CSU. Statistical information is according to ANSI T1.403 and can be recovered by the network equipment.
- The KML.7 parameters are monitored and controlled via any one of the Kilomux management systems (LCD, ASCII terminal, PC with Alarms Acquisition Manager and System [AAMS]).

KML.7

Fractional T1 Interface Main Link Module

SPECIFICATIONS

- **Framing**
D4, ESF
- **Supported Link Speeds**
56, 64, 128, 256, 384, 512, 768, 1024 and 1536 kbps
- **Line Code**
AMI
- **Zero Suppression**
Transparent, B7ZS, B8ZS
- **Impedance**
100 Ω , balanced
- **Signal Level**
Receive
With CSU: 0 to -36 dB
Without CSU: 0 to -10 dB
Transmit
With CSU: 0, -7.5, -15 dB
Without CSU: $\pm 3V$ ($\pm 10\%$)
soft-adjustable (measured at 0 to 655 ft)
- **Jitter Performance**
As per AT&T TR-62411
- **Connector**
RJ-45 (8-pin)
- **Transmit Timing**
Internal: ± 50 ppm
LBT: ± 130 ppm
DCE: ± 50 ppm

- **Diagnostics**
Local loop
Remote loop
Network line loop (with DSU)
Network payload loop (with DSU)
- **Statistics**
Full statistical diagnostics according to ANSI T1.403
- **Timeslot Allocation**
Consecutive (bundled)
- **Indicators**
Local sync loss (Red alarm)
Remote sync loss (Yellow alarm)
Test
Alarm
- **Configuration**
Programmable via any one of the Kilomux management methods

ORDERING

KM-2000M-KML.7
Fractional T1 Interface Main Link Module (without CSU)

KM-2000M-KML.7/CSU
Fractional T1 Interface Main Link Module (with CSU)

APPLICATION

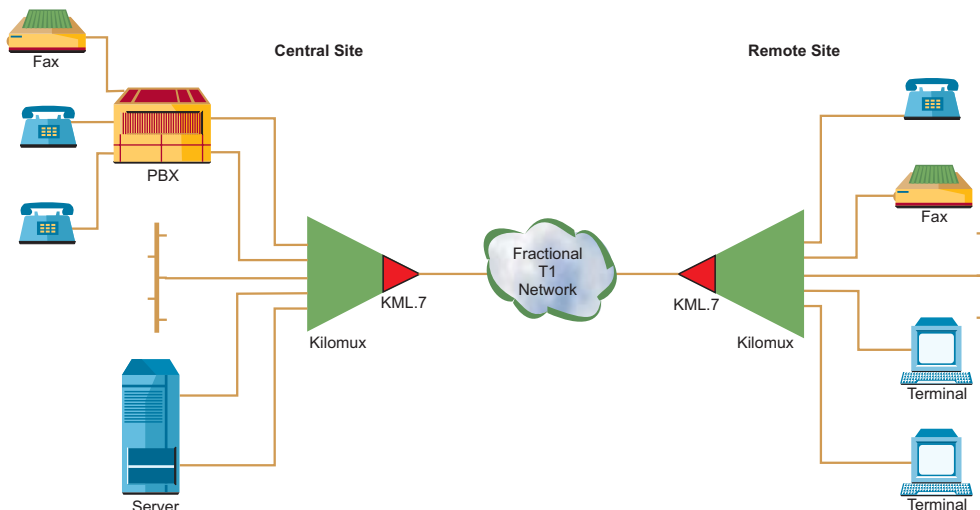


Figure 1. Point-to-Point Application



data communications

www.rad.com

• **International Headquarters**
24 Raoul Wallenberg Street
Tel Aviv 69719, Israel
Tel: (972) 3-6458181
Fax: (972) 3-6498250, 6474436
Email: rad@rad.co.il

• **U.S. Headquarters**
900 Corporate Drive
Mahwah, NJ 07430
Tel: (201) 529-1100
Toll free: 1-800-444-7234
Fax: (201) 529-5777
Email: market@radusa.com

420-103-01/03